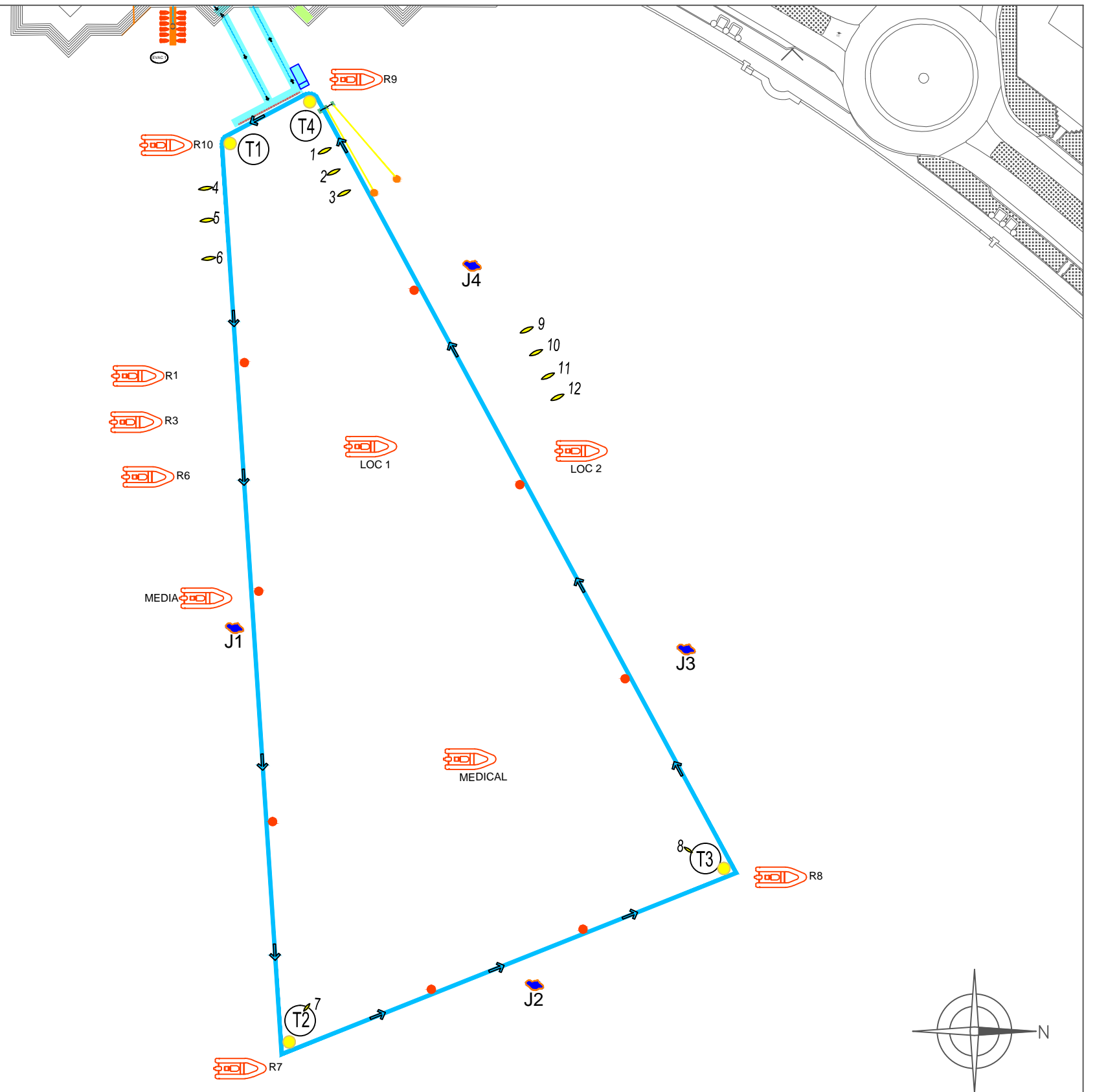
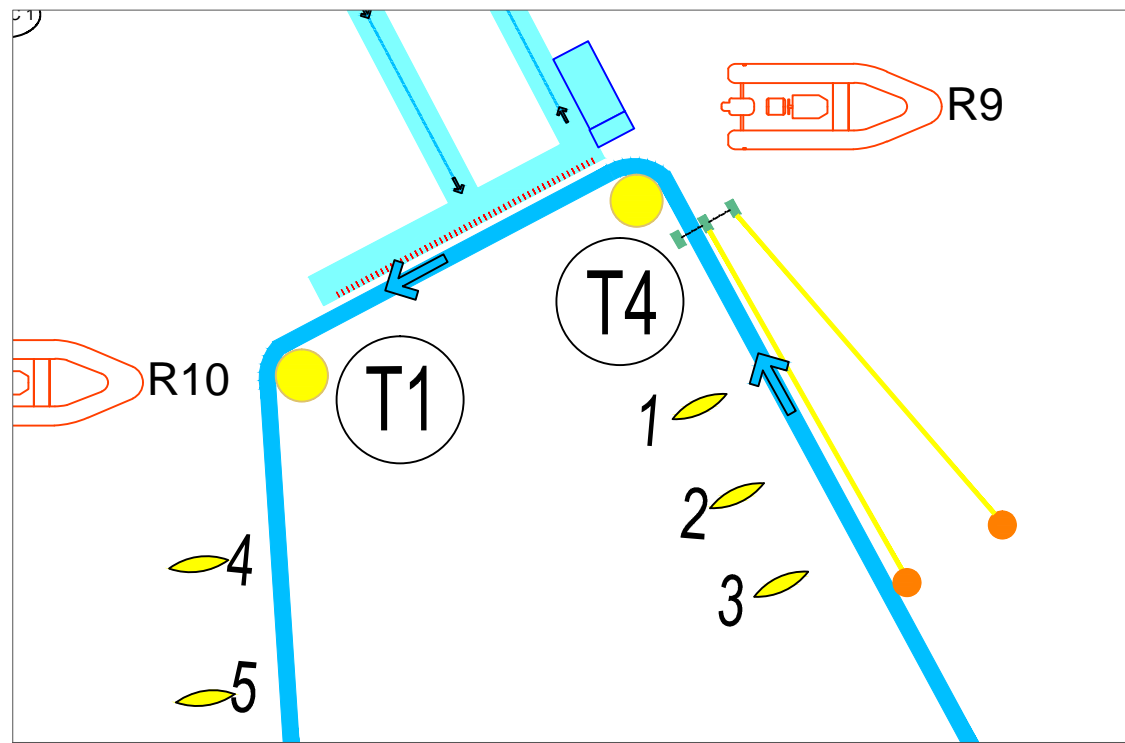


**LEGEND**

- Internal Sign / Sponsor Recognition
- ① Athletes Changing / Showers
- ② Bag drop / Brief / Call room
- ③ Medical Area
- ④ Doping Control
- ⑤ Interview Cubic
- ⑥ EV 01
- ⑦ Start / Feeding Zone
- ⑧ Finish/ Exit
- ⑨ Check out / Doping /FA
- ⑩ LOC
- ⑪ Media Working Area
- ⑫ Mixed Zone
- ⑬ TS/SP / Race Control
- ⑭ Athletes Lounge
- ⑮ Team Seating
- ⑯ Photo Position
- ⑰ VIP Area
- ⑱ VIP Catering
- ⑲ VIP Toilet
- ⑳ Media / VIP Entry
- ㉑ OBV
- ㉒ Athletes / Staff Entry
- ㉓ Staff Catering
- ㉔ Spectators
- ㉕ VIP Parking
- ㉖ EV 02
- ㉗ Storage Area
- ㉘ LOC Boat Pontoon
- ㉙ Ceremony Podium
- ㉚ Security Tent
- ㉛ TV Studio



FINA / HOSA Marathon Swim World Series &  
 Doha Open Water Challenge 2018  
 Venue Plan - V11



OWS Course Segment	Distance:m	Buoy Depth
From T1 - T2	490	T1 : 2 m
From T2 - T3	260	T2 : 5 m
From T3 - T4	470	T3 : 5 m
From T4 - T1	40	T4 : 2 m
Total	1250	



FINA / HOSA Marathon Swim World Series &  
Doha Open Water Challenge 2018

Marathon Course V11 ( 1,250 m )