



FINA REQUIREMENTS FOR SWIMWEAR APPROVAL (FRSA)

(Regulations valid for swimwear to be used from January 1, 2010)
as amended with effect from January 1, 2011

Fédération Internationale de Natation

Avenue de l'Avant-Poste 4
1005 Lausanne, Switzerland

Tel.: +41 21 310 47 10

Fax: +41 21 312 66 10

www.fina.org

FOREWORD

These rules apply to swimwear to be used in FINA and Olympic Games pool and open water swimming competitions and are applicable to swimwear in accordance with **FINA Rule GR 5 and BL8**.

GR 5 SWIMWEAR

GR 5.1 The swimwear (swimsuit, cap and goggles) of all competitors shall be in good moral taste and suitable for the individual sports disciplines and not to carry any symbol which may be considered offensive.

GR 5.2 All swimsuits shall be non transparent.

GR 5.3 The referee of a competition has the authority to exclude any competitor whose swimsuit or body symbols do not comply with this Rule.

GR 5.4 Before any swimwear of new design, construction or material is used in competition, the manufacturer of such swimwear must submit the swimwear to FINA and obtain approval of FINA.

BL 8 SWIMWEAR

BL 8.1 All swimwear used at Olympic Games and FINA Events (pool and open water competitions) shall be swimwear approved by FINA in accordance with the rules and procedures set forth in the FINA Requirements for Swimwear Approval (FRSA) issued by the FINA bureau and valid on the date of approval. Following an approval process conducted by the Swimwear Approval Commission, a list of approved swimwear is published by FINA (the Approved List) each year. The Approved List is published each year before December 31 and is valid starting from January 1 of the subsequent year.

BL 8.2 In swimming pool and open water competitions the competitor must wear only one swimsuit in one or two pieces. No additional items, like arm bands or leg bands shall be regarded as parts of a swimsuit.

BL 8.3 From January 1, 2010 in swimming pool competitions, swimsuit for men shall not extend above the navel nor below the knee, and for women, shall not cover the neck, extend past the shoulder, nor shall extend below knee. All swimsuits shall be made from textile materials.

BL 8.4 From June 1, 2010 Open Water swimwear for both men and women shall not cover the neck, extend past the shoulder, nor shall extend below the ankle. All Open Water swimsuits shall comply with the FINA Criteria for Materials and Approval Procedures.

(cont.)

BL 8.5 From January 15, 2010 in Masters Pool Swimming competitions the rules BL 8.1, BL 8.2 and BL 8.3 apply. From June 1, 2010 the rule BL 8.4 applies also for the Masters Open Water competitions.

[Note to BL 8.5: It is clarified that swimsuits which fulfil the shape requirement set forth in BL 8.3, respectively BL 8.4 (for Open Water Swimming) can be accepted even if they do not bear a valid FINA approved label provided they effectively and evidently fulfil the material requirements set forth in the current FINA Requirements for Swimwear Approval. This is the case for swimsuits made of traditional permeable textile (i.e. open mesh material) material (such as cotton, Nylon, Lycra and the like) with no application of surface treatment closing the open mesh structure. In case of doubt in this respect and when notably such doubt concerns a swimsuit used at the occasion of a World record, an actual check of the swimsuit can be required from the competitor or Certifying Official and the swimsuit is to be forwarded to the FINA Office for submission to an actual control of all or parts of the requirements.]

INDEX

CONTENT	PAGE
1. DEFINITIONS	5
2. SWIMWEAR SUBJECT TO APPROVAL	5
3. CRITERIA	5
3.1. Swimsuits	5
3.2. Caps	7
3.3. Goggles	7
3.4. Clarification of the application of the criteria	8
4. APPROVAL PROCEDURE	8
4.1. FINA Swimwear Approval Commission	8
4.2. Submission	8
4.3. Resubmission	9
5. VALIDITY OF THE APPROVAL	10
6. CONSISTENCY	10
7. CUSTOMISATION	10
8. EXEMPTION OF FORMAL APPROVAL	11
9. CATEGORY EXEMPTION IN CASE OF INTRODUCTION OF NEW CRITERIA	11
10. LIST OF APPROVED MODELS	11
11. CONTRIBUTION TO ADMINISTRATIVE AND EXPERT/TESTING COSTS	11
12. NOTICE OF APPROVAL	12
13. SWIMSUITS IN USE / WITHDRAWAL OF APPROVAL	12
14. EXCLUSION OF LIABILITY/INDEMNITY	13
15. ARBITRATION	13
16. APPLICATION / AMENDMENTS	13
Exhibit 1: THICKNESS MEASUREMENT	14
Exhibit 2: BUOYANCY MEASUREMENT	15
Exhibit 3: PERMEABILITY MEASUREMENT	16
Exhibit 4: APPLICATION FORM	17
Exhibit 5: GUIDE-LINES FOR 'FINA APPROVED' LABEL AND PACKAGE TAG APPLICATION	22
Exhibit 6: FINA IDENTIFICATION LABEL PLACEMENT	23
Exhibit 7: GUIDE-LINES REGARDING FUNCTIONALITY OF SEAMS IN SWIMSUITS	24
Exhibit 8: CLARIFICATION TO FRSA	25

1. DEFINITIONS

Swimwear	According to FINA rule GR5, swimwear includes swimsuits, caps and goggles.
Applicant	Legal entity applying for FINA approval on submitted swimwear.
Product¹	Is a piece of swimwear of a certain design/shape/material.
Material	Is all physical material used to produce every element of the swimwear.
Product line²	Products—which have similar construction and only vary in colour, size and shape. Any variations in colour, shape and sizes shall not lead to any changes to physical / technical parameters of the material.—The product consists of the basic construction features (such as the positions and numbers of seams on the different sizes or shapes).
Sample	A particular Product and/or a piece of material used in Product being submitted for the approval process.
FINA competitions	Pool and open water competitions organised by FINA including but not limited to FINA World Championships (50m), FINA World Swimming Championships (25m), FINA Swimming World Cup, FINA World Junior Swimming Championships, FINA World Open Water Swimming Championships, FINA Open Water Grand Prix, etc.
Olympic Games	Summer Olympic Games and Summer Youth Olympic Games.
Submission date	the last date by which an application for approval can be sent by the Applicant.

2. SWIMWEAR SUBJECT TO APPROVAL

As from the date of application of these rules, any swimwear used in FINA competitions and the Olympic Games shall comply with the criteria set forth in these rules and shall be a Product approved by FINA in accordance with the procedure set forth below. It is further specified that results achieved in any other competitions will only be recognised as world records by FINA if approved swimwear has been used.

3. CRITERIA

3.1. Swimsuits

The following criteria are applicable:

3.1.1. Design

- Decency: the wearing of the swimsuit shall not offend morality and good taste (in particular, but not exclusively, because of the cut of the suit and body parts exposure whether covered or not).
- Surface covered (shape):
For swimsuits used in pool swimming competitions:
 - Men's swimsuits shall not extend above the navel or below the knee.
 - Women's swimsuits shall not cover the neck or extend past the shoulders, or below the knee.

¹ Please refer to Exhibit 8 «Clarification to FRSA » clause 1.1

² Please refer to Exhibit 8 «Clarification to FRSA » clause 1.2

For swimsuits used in open water swimming competitions:

- Men's and Women's swimsuits shall not cover the neck, extend past the shoulder, or extend below the ankle.
- NB: Swimsuits fulfilling shape requirements for pool competitions comply a fortiori with shape requirements for Open Water swimming competitions.
- Composition/other items: Men's swimsuits are in one piece. Subject to observance of the decency rule and limitations of the body surface covered, women's swimsuits may be in one or two pieces. Other items covering the body that are not part of the swimsuit are prohibited.
- Colours: To avoid any doubt, colours will not be considered as part of the design for the purpose of these rules.

3.1.2. Material (general)

- Health: The material used must not put the health of the athletes at risk.
- Type of material: the material used for swimsuits can be only "Textile Fabric(s)". For the purpose of these rules, this is defined as material consisting of, natural and/or synthetic, individual and non-consolidated yarns used to constitute a fabric by weaving, knitting, and/or braiding.
- Surface treatment of the textile fabric: any material added on to the surface of the textile fabric (e.g. coating, printing, impregnation) shall not close the open mesh structure of the base textile fabric. The treated material shall also comply with all requirements, particularly in regard to thickness, permeability and flexibility. This part of the rule does not apply to logos and labels³. This applies to both the manufacturing level and the actual use of the swimsuit.
- Flexibility: the material shall be flexible and soft folding.
- Regular flat material: The material shall be regular and flat. The material shall not form outstanding shapes or structures, such as scales.
- Outside application: No outside application shall be added on the material.
- Variety of materials: Different materials may be used in one swimsuit provided they are textile fabrics as defined above; and they comply with all other criteria including thickness and permeability. Furthermore, combining materials shall not create any outstanding shape(s) or structure(s). Layered materials must be attached/ bound together except where required to protect sensitive parts ("privacy layers"⁴).

3.1.3. Material (measured values)

- Thickness: The total thickness of material/s used shall have a maximum value of 0.8mm. The thickness of layered materials is the total thickness of all layers are measured together. It is clarified that this maximum thickness does not apply to seams as far as the seams are functional, and their thickness and width result from their natural functions. The measurement procedure for thickness is described in **exhibit 1**.
- Buoyancy: The swimsuit shall not have a buoyancy effect above 0.5 Newton measured after application of vacuum. The measurement procedure for buoyancy is described **in exhibit 2**.
- Permeability: material(s) used must have at any point a permeability value of more than 80 l/m²/second. Permeability values are measured on material with a standard multidirectional stretch of 25 %. However, measures on material which cannot be

³ Please refer to Exhibit 8 : « Clarification to FRSA » clause 2.2 and 2.3

⁴ Please refer to Exhibit 8 : « Clarification to FRSA » clause 2.4

significantly stretched will be carried out on unstretched, flattened material. Permeability of layered materials is the permeability of layers measured together. The measurement procedure for permeability is described **in exhibit 3**

3.1.4. Construction

- No zippers or other fastening system is allowed.
- Seams⁵ shall be limited to functional systems and shall not create outside shapes. Use of seams (notably number, overall length, disposition) shall not affect compliance with the criteria set forth herein.
- External stimulation or influence: swimsuits which include any system providing external stimulation or influence of any type, including pain reduction, chemical/medical substance release, electro-stimulation etc. are prohibited.

3.2. Caps

The following criteria are applicable:

3.2.1. Design

- Independent item: the cap shall not be attached to the swimsuit or goggles nor be in continuity therewith (i.e. no "hood" or "mask" effect)
- Shape: The shape shall follow the natural form of the head
- Surface: The outer surface shall not include outside artificial shaping such as rigs or spoilers and similar.

3.2.2. Material

- Health: The material used must not put the health of the athletes at risk.
- Hardness: no hard material (material can have some rigidity but shall be able to follow the shape of the head: no hard helmets).
- Types: Different types of materials may be used on the same cap. They can be of different thicknesses. However, differences in the thickness of different materials shall not be used to form shapes.

3.2.3. Construction

- Seams if any shall be functional and shall not create outside shapes.

3.3. Goggles

The following criteria apply:

3.3.1. Design

- Independent item: the goggles shall not be attached to the cap nor be in continuity therewith (no "mask" effect)

3.3.2. Material/construction:

- Health. The material used or the construction must not put the health of the athletes at risk nor create a risk of injury.

⁵ Please refer to Exhibit 7 : «GUIDE-LINES REGARDING FUNCTIONALITY OF SEAMS IN SWIMSUITS» and Exhibit 8 «Clarification to FRSA » clause 2.5

- Safety standards and functionality: the goggles shall comply with prevailing safety standards for eyewear. Goggles have the function to protect the eyes against water and ensure visibility. Their design or construction shall serve these functions and especially shall not seek to obtain aquadynamic advantages (e.g. through extended shapes not related to the above functions).

3.4. Clarifications of the application of the criteria

The SAC may issue and update guide-lines and clarifications on an as-needed basis if issues of general relevance arise in the course of the effective conduct of the approval process.

The clarifications and guide-lines are part of the FRSA and are, and will be, attached as exhibits thereto.

4. APPROVAL PROCEDURE

4.1. FINA Swimwear Approval Commission

The approval procedure is conducted by a Commission of three to five members (Swimwear Approval Commission, FINA SA Commission).

The Members of the FINA SA Commission are appointed and removed by the FINA Bureau.

The Commission Members shall be independent from the manufacturers. In particular, they shall not have any relationship with a swimwear manufacturer (whether of contractual nature or as a shareholder direct or indirect) nor have had such during the five preceding years.

The FINA SA Commission Members execute confidentiality undertakings.

4.2. Submission

4.2.1. Products to be submitted

All swimwear to be used during the FINA pool and open water swimming competitions and the Olympic Games (see art. 2 above).

All variations of a given Product (including various cuts, silhouettes, and men's and women's models, variations in materials) shall be submitted for approval.

4.2.2. Application

An application shall be submitted for each Product (including all variations if applicable) using the application form in exhibit 4

The application shall include a detailed description of the Product and its specifications.

Reference samples shall be provided. Together with the submission of swimsuits, the applicant shall also provide one unbound sample of 1 m² of each different material⁶ used in the swimsuits submitted for approval.

The application shall include a formal confirmation that the Samples submitted (in all sizes and variations) are fully consistent with the indications set forth on the form and that the swimwear produced and distributed on this basis will be fully consistent with the submitted Samples.

The application shall also include a confirmation that the Product(s) concerned will be made effectively available on the market at the latest on January 1 of the following year. Availability means that the swimwear is available for purchase by federations or competitors either on the open retail market and/or directly from the Applicant.

The form shall be signed by the Applicant which thereby confirms formal acceptance of the approval rules and procedures. Applications not submitted by using a duly signed form will not be considered.

⁶ Please refer to Exhibit 8 «Clarification to FRSA » clause 3.1

Any submission not based on a signed application may be deemed as non existent, respectively as withdrawn.

Additional information/samples may be required from the Applicant.

The samples and information provided shall be used exclusively for the purpose of the approval procedure.

It is clarified that samples are retained by FINA for reference and control purposes. They may be destroyed when the approval becomes moot (corresponding swimwear withdrawn from the list or rejected swimwear after expiry of challenge dead-line or exhaustion of challenge possibilities).

4.2.3.Submission Date

There is one yearly submission date, i.e. July 1. It is to be applied for the first time on July1, 2011 and then each subsequent year.

FINA may modify the yearly application date if appropriate for a timely conduct of the approval process.

FINA may establish additional submission dates.

Applications submitted after the date of submission will not be considered.

4.2.4.Examination by the FINA SA Commission

The FINA SA Commission examines the applications and notifies its decisions to FINA normally within one month from the submission date.

However, the approval procedure for the submitted swimwear, or part thereof, may be subject to delays resulting from the time necessary for the examination process.

4.2.5.Experts / technical testing

Technical testing and examination, as needed, is conducted under direction of the FINA Swimwear Approval Commission, SAC, by experts appointed by FINA (presently at, but without limitation, the EPFL in Lausanne).

Information on the test results of specific Samples are communicated to the Applicant involved, upon request. No results are communicated to any third party.

The only results relevant for the approval process are those obtained by the FINA SAC appointees from the samples provided with the application, or from additional Samples specifically requested by the FINA SA Commission. Measurements taken outside of that process on the same Samples, or others, are not relevant for the approval process, irrespective of the equipment used.

4.2.6.Results of the submission.

The decision of the FINA SA Commission is reported in writing by FINA to applicants within ten days from the date of the decision.

In the case of a decision not to approve, the FINA SA Commission identifies the ground(s) for non-approval.

The publication of approvals occurs once a year as per art. 5 below.

4.3. Resubmission

4.3.1.Resubmission of Products

In the event that an application for a Product is rejected and the cause of rejection can be corrected, the Applicant concerned is given a dead-line by the FINA SA Commission to resubmit the same

Product with the required corrections. The period given to an Applicant for a submission cannot be less than 30 days.

The Samples resubmitted shall be the same Product as the previously submitted Samples, save for the modifications linked with the SA Commission requirements. Resubmission cannot serve for new models to be presented that are different from the ones initially submitted.

Applications received after the set dead-line will not be considered.

4.3.2. Resubmission process

The resubmission process shall be conducted as for the original submission process and the above provisions regarding submission apply mutatis mutandis:

- An application shall be resubmitted for each concerned Product as per clause 4.2.2. and includes reconfigured samples with the variations as required by the FINA SA Commission.

Rejection after resubmission is final and no further submission or resubmission can be made until the next yearly submission date.

5. VALIDITY OF THE APPROVAL

An approval is valid upon its notification to the Applicant.

Notwithstanding the above, approvals will be only effective, i.e. the corresponding swimwear may be used in FINA competitions and at the Olympic Games, from the year following their first publication on the List of Approved Swimwear (see below art. 10).

As of the effective date of these revised rules (January 1, 2011), the swimwear with approvals in effect for the FINA events taking place in 2011 are:

- The swimsuit models on the List of Approved Swimwear as last published in December 2010;
- All caps and goggles approved to date by FINA.

The validity of the approval is further subject to the condition that the swimwear on the list has to be available on the market (available for purchase by federations and competitors) at the latest by January 1 following the publication.

Upon request, Manufacturers shall provide evidence of date of market availability. If a Product is not available on January 1 of the year in which the approval was to become effective, the corresponding approval shall be withdrawn from the list. The concerned Applicant may submit an application for relisting on the next yearly list. Such application shall be supported by clear and positive evidence of availability.

Approvals granted remain valid and effective until the relevant criteria for a category of swimwear is changed.

In the event of introduction of new or amended criteria, all swimwear affected by the application of these changed criteria are subject to re-approval (subject to exemptions as per clause 9 below).

6. CONSISTENCY

The Product that are manufactured and used shall fully correspond to, and be consistent with, the Samples submitted to FINA SAC for obtaining the necessary approvals. Inconsistency found in the Products may lead to withdrawal of the approval (see clause 13 below).

Further, any modification before use such as including impregnation is prohibited.

7. CUSTOMISATION

The approval is not valid for the Products with any kind of customisation. There shall be no variation/modification for individual swimmers from the Product corresponding to the Samples submitted to obtain approval.

8. EXEMPTION OF FORMAL APPROVAL

The FINA SA Commission may issue an exemption from formal approval in respect to swimwear which can be determined as obviously compliant following general and easily checked objective criteria. Conditions of such exemption will be published by the FINA. They are not subject to any review or challenge.

9. CATEGORY EXEMPTION IN CASE OF INTRODUCTION OF NEW CRITERIA

The FINA SA Commission may also issue an exemption from re-approval for already approved swimwear by new or amended criteria. Conditions of such exemption will be published by FINA. They are not subject to any review or challenge.

10. LIST OF APPROVED SWIMWEAR

Following the approval process, FINA publishes a List of Approved Swimwear each year which serves as a reference for the following year.

The List of Approved Swimwear for any given year includes all the previously approved swimwear as published on the list for the preceding year (subject to a change in the criteria for a category a swimwear) and is updated with the result of the yearly approval process.

In order to present an accurately updated publication of the List of Approved Swimwear, Manufacturers shall notify FINA by no later than November 15th of each year of formerly approved Products which are to be discontinued, or of newly approved Products which will not be available by the following January 1. The discontinued and not-available Products will be removed from the Approved List for the subsequent year.

The List of Approved Swimwear shall be published each year on or before December 20 on the official website www.fina.org.

11. CONTRIBUTION TO ADMINISTRATIVE AND EXPERT/TESTING COSTS

A contribution to the administrative and expert/testing costs will be applied and charged to Manufacturers as follows (contribution per Product Line):

- Swimsuits: € 3'000.-- + VAT (if applicable).
- Caps and goggles: € 750.-- + VAT (if applicable).

The above contributions applies in connection with each Product Line .

Each Applicant shall calculate the applicable fees based on the number of Product Lines it intends to submit and shall inform FINA accordingly in order to allow issuance of a corresponding invoice. The corresponding payment must be made at the latest on the dead-line for submission. Evidence of payment shall be provided either with the application or separately at the latest on the same date.

Payment of the calculated fees on or before the submission dead-line is a condition for a valid application and applications effected without corresponding fee payment will not be considered.

Upon receipt of the applications, the FINA Office will check the fee calculation of the Applicant against the actual application received and notify the Applicant of any discrepancy. The difference, if any, will be either claimed or reimbursed.

In the event that a complementary payment is requested, such payment shall be effected within 10 days of receiving the request. If the Applicant does not agree with the calculation, the company shall nevertheless be required to pay the requested amount without prejudice to claim of reimbursement.

If the payment is not made in full within the set dead-line, the applications will not be processed and will be deemed as withdrawn. Any payment already-made will be forfeited.

12. NOTICE OF APPROVAL

FINA will provide Applicants with a "FINA Approved" identification label" for each approved Product. The label carries a unique identification number which include a reference to the year from which the approval will be valid.

The respective labels (artwork) are provided for each Product upon request by the Applicant certifying that the Product(s) under consideration will be available on the market on or before January 1 of the year of validity for the relevant List of Approved Swimwear.

Applicants must undertake and warrant to apply labels strictly and only on Products identical to, and fully consistent with, the actual Samples submitted to obtain the approval.

The general FINA Approved Package Tag can be used on packaging and in product documentation (in a non-prominent manner). Such application shall always be clearly and specifically related to approved Product only.

12.1. "FINA Approved" Identification Label

The applicant must use the "FINA Approved" identification label for indicating that the Product in use has been approved. The notice shall be placed in a position allowing control when worn.

- **Swimsuits:**
All swimsuits approved by the FINA SA Commission shall bear appropriate corresponding labels. If the swimsuit is in two pieces, each piece shall bear a label. The labels should be printed or affixed to the swimsuits in a manner ensuring that they cannot be removed without destroying the label (to prevent transfers);
- **Caps:** (Appropriate methods to apply the labels shall be determined in consultation with the Manufacturers);
- **Goggles:** (Appropriate methods to apply the labels shall be determined in consultation with the Manufacturers).

12.2. "FINA approved" Package tag

The "FINA approved" tag is aimed to be printed on hang tags or packages, and not on the product itself. The tag can also be used on the internet and in the product catalogues. However, it always has to clearly and specifically refer to approved swimwear only.

The FINA logo, or other trademarks of FINA, cannot be used as their usage is exclusively reserved to the FINA Partners for commercial/promotional activities and no other company is entitled to use the FINA logo or other trademarks of FINA in any way whatsoever.

13. SWIMSUITS IN USE / WITHDRAWAL OF APPROVAL

The validity of an approval is based on the fact that any and all the swimwear brought on the market as approved swimwear are fully consistent with the models and the actual Samples submitted to obtain the approval.

The Applicants shall certify and be responsible for the fact that the swimwear they manufacture and bring on the market as approved swimwear are fully consistent with the Products and the actual Samples submitted for approval.

Compliance checks can be effected by FINA at any time on swimwear presented as approved in competition or otherwise.

Upon request of FINA, the Applicant shall deliver additional Samples of approved Products as brought on the market for compliance checks.

Competition results achieved with swimwear found to be non compliant with any of the criteria will not be recognised.

If swimwear presented as approved Product are found, during competitions or otherwise, to be not fully consistent with the Products and the actual Samples submitted for approval-and this is not linked with modifications made outside the control of the Applicant, the approval can be withdrawn.

The decision to withdraw the approval will be issued by the FINA Executive after having heard the Applicant concerned. In case of urgency (e.g. major event in course), the FINA Executive may provisionally suspend an approval before hearing the concerned Applicant.
A withdrawal fee of € 10'000.— per product will be due by the concerned Applicant.

Application for re-approval for a withdrawn Product is to be effected through the normal process for approval and the application will be held as a new submission and handled accordingly. As a condition for re-approval, the concerned Manufacturer shall bring evidence supporting the fact that it will guarantee consistency between Samples and Products effectively on the market.

14. EXCLUSION OF LIABILITY/INDEMNITY

14.1. Exclusion of liability

To the full extent permitted by law, the Applicant expressly waives any claim against FINA its officers, employees and/or Commission Members arising out or in connection with the approval process set forth in these provisions.

14.2. Indemnity

The Applicant shall indemnify and keep FINA, its officers, and/or the Commission Members harmless against claims, damages or costs (including reasonable attorney's fees) arising out of or linked with claims by third parties based on the approval of applicant's Product(s) and/or use by the Applicant of the approval notice.

15. ARBITRATION

Any dispute (including i.a. challenge of the decisions of the FINA SA Commission and/or of the FINA Executive, decision or disputes in connection with payments or other disputes) in connection with an approval procedure shall be exclusively submitted to the Court of Arbitration for Sport in Lausanne in accordance with the CAS arbitration rules.

Disputes over payments of less than € 100'000.--- shall be submitted to a single arbitrator.

Swiss law shall apply as substantive law.

For the avoidance of doubt, criteria set forth in these rules shall not be subject review. The same apply to conditions for exemptions.

16. APPLICATION / AMENDMENTS

These rules shall become applicable from January 1, 2011.
They apply to swimwear to be used in competition from January 1, 2010.

Amendments shall be issued by the FINA Bureau. They become immediately applicable subject to a different decision of the FINA Bureau.

Issued by the FINA Bureau on 29th January 2011.

- Exhibit1: THICKNESS MEASUREMENT
- Exhibit 2: BUOYANCY MEASUREMENT
- Exhibit 3: PERMEABILITY MEASUREMENT
- Exhibit 4: APPLICATION FORM
- Exhibit 5: GUIDE-LINES FOR "FINA APPROVED" LABEL AND PACKAGE TAG APPLICATION
- Exhibit 6: FINA IDENTIFICATION LABEL PLACEMENT
- Exhibit 7: GUIDE-LINES REGARDING FUNCTIONALITY OF SEAMS IN SWIMSUITS
- Exhibit 8: CLARIFICATION TO FRSA

EXHIBIT 1**THICKNESS MEASUREMENT****Value**

- Maximum value: equal or less than 0.8 mm
- Tolerance: +/- 0.1mm
-

Equipment

The equipment consists of a reference plate, a disk (parallel to the plate) together with a test gauge capable of measuring the distance between disk and plate with **an accuracy of at least 0.01 mm.**

Specifications:

- according to ISO 5084
- disk size 100 +/- 1 mm² (diameter 11.28 +/- 0.05 mm),
- pressure 1 +/- 0.01 kPa



EXHIBIT 2**BUOYANCY MEASUREMENT****Value**

- Maximum value: equal or less than 0.5 Newton
- Tolerance: +/- 0.1 Newton

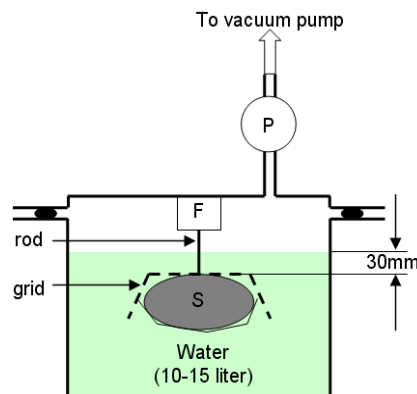
(NB: Value to be observed for all sizes/recommendation to provide sample in largest available size)

Equipment

The equipment (see illustration below) consists of a tank connected to a vacuum pump and a sample-holder (including rod and a grid cage) allowing force to be applied to immerse the swimsuit below the water line. There must be a measuring system recording with time the force acting on the rod and the pressure inside the tank.

Process:

- Force and vacuum pressure are to be monitored during whole process.
- Swimsuit is softly fold to a ball and fixed below the grid.
- The grid is fixed to the force transducer.
- When tank is closed (vacuum tight), the grid is immersed at a depth of 30mm and kept immersed for up to 5 minutes to allow for water absorption and air bubbles to escape.
- Application of vacuum pressure (100mbar) to force residual air extraction for up to 5 minutes.
- Release of vacuum pressure to atmospheric pressure, wait for equilibrium for up to 5 minutes.
- Read force from the transducer and compensate for the force imposed by the sample holder (weight and buoyancy).

Illustration

Airtight tank (approved for the pressure)
 connected to a vacuum pump
 P: vacuum pressure transducer (~10-1000mbar)
 F: force transducer (~50N)
 S: swim suit

EXHIBIT3**PERMEABILITY****Value**

- Minimum Value : equal or higher than 80 liters/square meter/seconds (l/m²/s)
- Tolerance: +/- 5 % (in the range of Minimum Value)

Measurement of air permeability

A flow of air is sucked through the fabric specimen, a tube system and differential pressure transducer. The unit measures the resultant differential pressure (proportional to volumetric flow), the absolute pressure and the medium temperature. The air permeability of the measured specimen is established based on those values. The value of permeability is given in litres/m²/seconds for a given material.

Measurement characteristics

Measuring area:	Diameter 25 mm.
Differential pressure:	20 Pa
Measuring range:	0-400 l/m ² /s (high accuracy around Minimum Value)
Definition of stretch:	Uniform bidirectional and perpendicular stretch of 25% applied to the fabric (see sketch below).

- Conditions:
- a) The swimsuit material is tested new and dry.
 - b) Measurements will be performed both from the outside in and from the inside out. Lowest value is the determining.

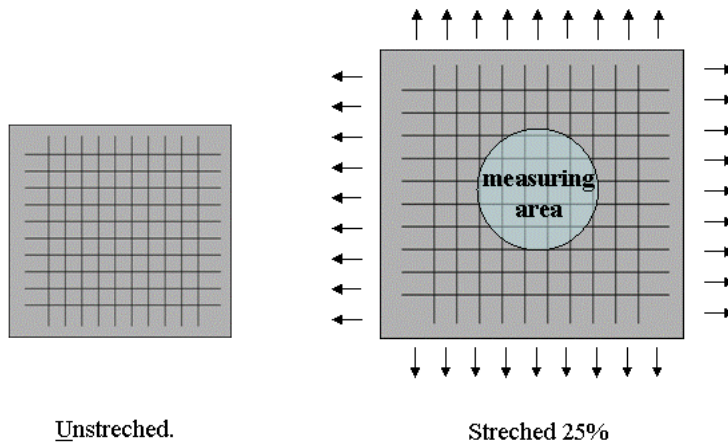


EXHIBIT 4**APPLICATION FORM FOR APPROVAL OF SWIMSUIT**

For approval list (year): _____

(to be filled for each product submitted for approval)

This application is made in accordance with the FINA Requirements for swimwear approval in force at the time of application and is subject to the provisions contained therein. The Applicant acknowledges the content of these rules and accepts to comply therewith.

<i>Name of the Company:</i>	
-----------------------------	--

1. APPLICATION FOR PRODUCT:

<i>Product line name:</i>	
<i>Product name:</i>	
<i>Reference number :</i>	
<i>Type (Men/Female):</i>	
<i>Shape:</i>	
<i>Possible variation in colours:</i>	
<i>Size:</i>	
<i>Possible variation in stitching:</i>	
<i>Other variations:</i>	

Note: Shapes for men swimsuit: Classic (brief), Jammer (pants short), Pants, Full-knee, Full-body
Shapes for women swimsuit: Classic (trunk), Full-knee, Full-body

2. CONSTRUCTION**a. MATERIAL (fabric)** Description of material(s) and its combinations used.

	Your reference	Description of material
<i>Material</i>		
<i>Material B</i>		
<i>Material C</i>		
<i>Material D</i>		
<i>Lining A</i>		
<i>Lining B</i>		
<i>Combination I</i>		
<i>Combination II</i>		

b. SEAMS

	Length (mm)	Width (mm)	Type
<i>Seams</i>			
<i>Edge seams</i>			
<i>Grippers</i>			
<i>Waistband</i>			
<i>Straps</i>			

c. DESCRIPTION OF CONSTRUCTION

--

d. OTHER OBSERVATIONS OR ELEMENTS TO BE DESCRIBED (if applicable)

--

3. SAMPLES PROVIDED

	<i>Samples</i>	<i>Your reference</i>	<i>FINA reference</i>
1			
2			
3			
4			
5			
6			
7			
8			

4. APPLICANT CONTACT DETAILS

<i>Address:</i>	
<i>Contact person:</i>	
<i>Email:</i>	
<i>Phone number:</i>	<i>Fax number:</i>
<i>Website:</i>	

The applicant confirms that the Samples and respective commercial products do not have any impact on health and do not put the health of the athletes at risk.

The applicant hereby confirms that all the swimsuits manufactured and produced will be fully consistent with the swimsuit and material samples submitted. Approvals are only valid in connection with fully consistent unmodified swimsuits (products). Any modification of a product (swimsuit model) makes the corresponding approval invalid. Applicant is aware of the content of art.13 of the "FINA Requirements for swimwear approval".

All information provided is for use in the approval process only and FINA shall keep the application, supporting documentation and samples confidential.

This application will be considered for approval only after proof of payment of the contribution to administrative and expert/testing costs in accordance with art.11 of the "FINA Requirements for swimwear approval".

The applicant confirms its acceptance of the approval rules and procedures ("FINA Requirements for swimwear approval", see clause 4.2.2).

.....
(date and place)

.....
(Company's authorised signatory(ies))

PLEASE RETURN THIS FORM TOGETHER WITH THE SAMPLES TO:

FINA OFFICE

Avenue de l'Avant-Poste 4, CH-1005 Lausanne, Switzerland

APPLICATION FORM FOR APPROVAL OF CAPS & GOGGLES

For approval list (year): _____

(to be filled for each product submitted for approval)

This application is made in accordance with the FINA Requirements for swimwear approval in force at the time of application and is subject to the provisions contained therein. The Applicant acknowledges the content of these rules and accepts to comply therewith.

<i>Name of the Company:</i>	
-----------------------------	--

1. APPLICATION FOR PRODUCT:

<i>Product line name:</i>	
<i>Product name:</i>	
<i>Reference number :</i>	
<i>Type (CAP/Goggle):</i>	
<i>Possible variation in colours:</i>	
<i>Other variations:</i>	

2. CONSTRUCTION

e. MATERIAL Description of material(s) used.

	<i>Your reference</i>	<i>Description of material</i>
<i>Material 1</i>		
<i>Material 2</i>		
<i>Material 3</i>		
<i>Material 4</i>		

f. DESCRIPTION OF CONSTRUCTION

g. OTHER OBSERVATIONS or OTHER ELEMENTS TO BE DESCRIBED (if applicable)

3. SAMPLES PROVIDED

	<i>Samples</i>	<i>Your reference</i>	<i>FINA reference</i>
1			
2			
3			
4			
5			
6			
7			

4. APPLICANT CONTACT DETAILS

<i>Address:</i>	
<i>Contact person:</i>	
<i>Email:</i>	
<i>Phone number:</i>	<i>Fax number:</i>
<i>Website:</i>	

The applicant confirms that the Samples and respective commercial products do not have any impact on health and do not put the health of the athletes at risk.

The applicant hereby confirms that all the swimwear manufactured and produced will be fully consistent with the product and material samples submitted. Approvals are only valid in connection with fully consistent unmodified products. Any modification of a product makes the corresponding approval invalid. Applicant is aware of the content of art.13 of the "FINA Requirements for swimwear approval".

All information provided is for use in the approval process only and FINA shall keep the application, supporting documentation and samples confidential.

This application will be considered for approval only after proof of payment of the contribution to administrative and expert/testing costs in accordance with art.11 of the "FINA Requirements for swimwear approval".

The applicant confirms its acceptance of the approval rules and procedures ("FINA Requirements for swimwear approval", see clause 4.2.2).

(date and place)

(Company's authorised signatory(ies))

PLEASE RETURN THIS FORM TOGETHER WITH THE SAMPLES TO:

FINA OFFICE

Avenue de l'Avant-Poste 4, CH-1005 Lausanne, Switzerland

EXHIBIT 5**GUIDE-LINES FOR “FINA APPROVED” LABEL AND PACKAGE TAG APPLICATION**

This document is aimed to clarify requirements for usage of the FINA Approved label and FINA approved Tag on approved swimwear and their correspondent packages/ hang tags in accordance to the art. 12 of the “FINA Requirements for Swimwear Approval”

In order to keep consistency throughout the approved products and as a means of proving conformity and certification for the consumers buying/receiving FINA approved swimwear, there are the following regulations for the swimwear manufacturer to be followed.

“FINA Approved” Identification Label for swimsuits

According to the FINA BL 8 Rule, the athletes attending the FINA World Championships, Olympic Games and other FINA events must wear the FINA Approved Swimsuits. The swimsuits are subject to be checked by the officials at the occasion of an event.

All swimsuits of the models-shapes approved by FINA shall bear appropriate corresponding labels. If the swimsuit is in two pieces, each piece shall bear a label.

The following guidelines shall be observed by the manufactures in respect of the labelling of their swimsuits with FINA approved labels:

- Each swimsuit of an approved model-shape shall bear a corresponding FINA Approved label;
- Each label corresponds to particular model-shape of the swimsuit approved by FINA;
- The manufacturer is entitled to produce the label according to the specifications provided by FINA;
- The label has to be produced with high contrast (in white on dark colours or in black on light colours);
- The size of the label shall respect the reference size of 35X20mm (H x W) with a tolerance;
- The label shall be printed/tightly affixed (non removable) on the outside of each piece of the swimwear and placed as per attached document (FINA Identification Label Placement). The labels should be printed or affixed in manner ensuring that they cannot be removed without destroying the label (to prevent transfers).

IMPORTANT:

The Manufacturers undertake and warrant to apply labels strictly and only on swimsuits of the corresponding approved models-shapes.

“FINA approved” package tag

The “FINA approved” tag can only be used in relation with FINA approved swimwear. The “FINA approved” tag can also be used for approved goggles’ and swimming caps as a hanging tag and/or applied on packages.

“FINA approved” tag is aimed to be printed on hang tags or packages, not on the product itself. The tag is allowed to be also used on the internet and on the product catalogues however it has to be always brought together and with clear reference to particular swimwear effectively approved by FINA.

Please note that the “FINA approved” tag has to be used only as a proof of the conformity for the swimwear manufactured by your company with the FINA rules and shall not be in any case used as a means of promotion or association with FINA.

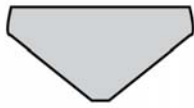
Size and colour of the “FINA approved” tag:

- The printing of the tag should always be done in Black and white colours.
- The size of the tag cannot dominate on overall area it is used on and moreover cannot be bigger than 47mm x 15mm when printed and 130pix -41pix when used on a webpage.

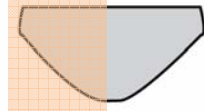
Please note that the FINA logo or other trademarks of FINA cannot be used for identification purposes as its usage is exclusively reserved to the FINA Partners for commercial/promotional activities and no other company is entitled to use the FINA logo or other trademarks of FINA in any way whatsoever.

EXHIBIT 6

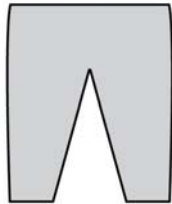
FINA IDENTIFICATION LABEL PLACEMENT



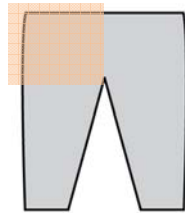
FRONT



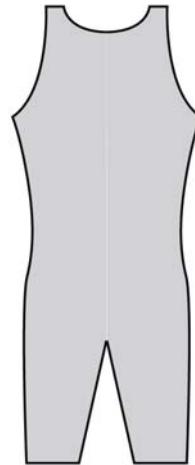
BACK



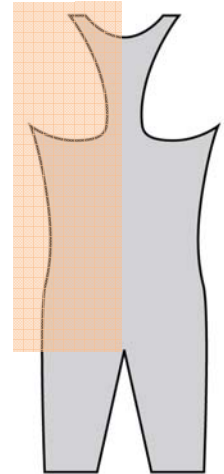
FRONT



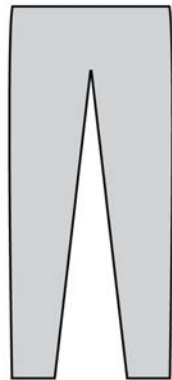
BACK



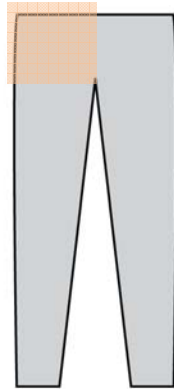
FRONT



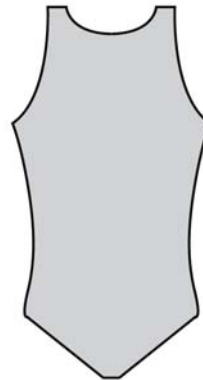
BACK



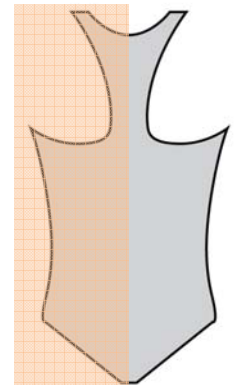
FRONT



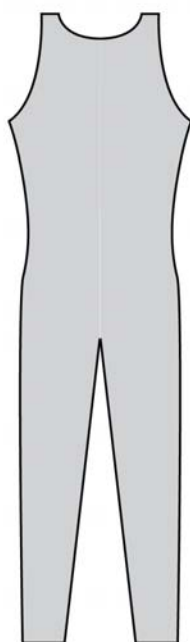
BACK



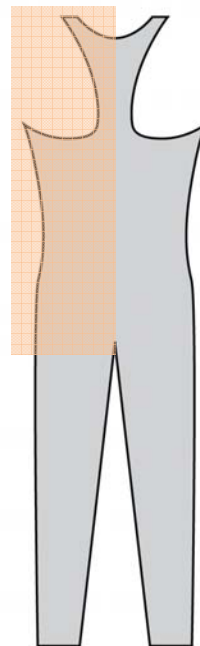
FRONT



BACK



FRONT



BACK


 - placement area

EXHIBIT 7

GUIDE-LINES REGARDING FUNCTIONALITY OF SEAMS IN SWIMSUITS

Seams

The FINA SA Commission observes that swimsuits include various elements which have a joining, binding and/or finishing function. These include the seams in the narrow meaning of the word (i.e. the element binding different parts of continuous material), "edge seams" at the edges of the swimsuits, "grippers", i.e. edge seams which include hold the legs of the swimsuits in place and waistbands holding jammers or briefs. Further straps may be used to hold the upper part of women bodysuits.

All these elements have a specific construction (i.e. sewn or welded seams, use of folded material, use of elastic bands or silicone or similar strips) which is different from the sole use of textile material.

Commission's evaluation

In each case, the FINA SA Commission will evaluate the functionality of the seams according to the above definition including grippers, waistbands and straps.

Without prejudice to decisions in specific cases, the following document sets forth the guidelines regarding these elements which the FINA SA Commission will take into account.

General principles

The purposes of the seams are:

- To join together the elements of the swimsuit ("seams")
- To finish properly the swimsuit at its edges ("edge seams")
- To prevent the swimsuit legs to roll back ("grippers")
- To hold a jammer or brief ("waistband")
- To maintain the upper part of a women's bodysuit ("straps")

The seams must be fit for the above purposes and shall have no other function. The following elements will be considered in this respect:

Width:

- Joining seams shall not exceed 5mm.
- Reinforcement/protection tapes such as those used to form or cover welded seams shall not exceed **20mm**.
- Edge seams and grippers shall not exceed 20mm.
- Waistbands shall not exceed 25.4mm (one inch)

Number of seams

- Excessive numbers of seams are prohibited

Clarifications regarding permeability and material

Permeability will not be tested on seams, provided they are considered as legitimate and functional seams.

Non textile material/elements/application can be used in seams in the following:

- In "edge seams" including in particular "grippers", to ensure holding functions, e.g. through silicone strips and/or elastic cord(s).
- In waistbands and straps (e.g. elastic cord inside folded material)
- Use of glue to fix the seam or the corresponding reinforcement tapes on (e.g. to hold welded seams or to cover seams in merging areas)

The above is provided for guidance only and without prejudice. The FINA SA Commission decisions will be based on an overall evaluation of the individual swimsuits.

EXHIBIT8

CLARIFICATION TO FRSA

The below list of clarifications is created based on information received from FINA Swimwear Approval Commission and came as a result of effective conduct of approval process with full consideration and continuous follow up of technological development.

1. Clarification to clause DEFINITIONS

1.1. Definition “Product”

FRSA: *“Product is a piece of swimwear of a certain design/ shape and produced with the certain material.”*

In swimwear approval process definition of product - is used to identify every particular piece of swimwear (swimsuit, caps and goggles).

Product (Standard Definition): The end result of the manufacturing process, to be offered to the marketplace to satisfy a need or want.

Considering that the Product is the end result of the manufacturing process it can consists of one or many elements. All the elements of the product have to be fixed, attached to each other and have to have practical meaning according to the product functionality.

1.2. Definition “Product line”:

FRSA: *“Product line – the number of products that have similar construction and are only vary in colours, sizes and shapes. Any variation in colours, shapes and sizes should not lead to any change of physical / technical parameters of the material the product consists of.”*

The swimwear will be considered as the products of one product line if all of the following criteria are fulfilled.

Material:

- The same type or combination of the same types of material is used to manufacture the products.
- Every element of the product is made of the same material as the corresponding and relative element of other product.

Construction:

- All the products of the same product line have to have the same main part that is designed and structured in the same way.
- The products must consist and/or to be constructed of same elements with the same shape / design. In case of difference in shapes, main part of the product has to be considered.
- The difference in the shapes of the product within one product line is accepted only in case of extending of some elements of the main part or by attaching of additional element to the main part with only condition of direct application to it.
- Types of joints/ seals/seams between the elements are the same between the products
- External design of the main part including the internal (inside) parts of the product should be the same

Product Line of the swimsuits:

For the swimsuits, maximum number of products within one product line can be up to 8 (eight) basic shapes and consists of the following

- 1) Classic (Men)

- 2) Pants-Short (Men)
- 3) Pants-Long (Men)
- 4) Full-Knee (Men)
- 5) Full-Long-Leg (Men)
- 6) Classic (Women)
- 7) Full-Knee (Women)
- 8) Full-Long-Leg (Women)

(some additional shapes can be considered for Open/Closed back shapes)

Contribution to administrative and tests is calculated based on the number of Product lines submitted.

2. Clarification to clause CRITERIA

2.1. Clarification to 3.1.2. “Surface treatment of the textile fabric”

Provision

This issue is linked with the application of coating or other treatments of the textile material which impact the open mesh structure of the material. The requirement to use textile (see definition in art. 3.1.2 implies the use of an open mesh material and to avoid use of material with consolidated structure. The material shall not be treated in a way which affects this open, non consolidated structure.

The FINA SA Commission position

Given that:

- Using open mesh textile material is a central requirement of the new rules.
- Art. 3.1.2 has the objective of preventing the open nature of the textile material being modified / affected via coating or other treatment of the surface of the material through of any substance (e.g. glue, paint, polymeric material) or technique (e.g. heat treatment) which alters the open mesh structure of the textile material.
- This issue relates to the nature / structure of the material and is not linked with the observance of the permeability value (which must be met in any event).

Interpretation/ Application Any swimsuit constructed with material treated/coated with a technique which closes the open mesh structure of the base textile material will be rejected. Surface treatment /coating consists in the application of a substance on any surface of the textile material, respectively on each of the different layers of material (e.g. application of glue in-between layers). This applies irrespective of the permeability value which shall be respected in any event.

Swimsuits with material treated or coated with mesh closing techniques will be rejected, irrespective of permeability Values

2.2. Clarification to 3.1.2. “Surface treatment of the textile fabric”

Provision

This is a specific sub-issue related to surface treatment and coating. Trademarks, logos and decorative designs are often applied on textile material using printing techniques which add a layer of material (e.g. paint or plastic layer). These techniques are “mesh closing” techniques in the above sense. Art. 3.1.2 expressly permits their application in connection with logos (i.e. trademarks or sponsors’ identifications) and labels but not for designs.

The FINA SA Commission position

Given that:

- The logo exemption refers to logos as permitted by the rules governing commercial identifications
- The label exemption applies i.a. for the approval label. - The effective impact of a local application of a mesh closing technique to apply a decorative design can be limited, there

is however no practical way of setting precise and practically controllable limits of acceptability.

- There are techniques or methods allowing the application of a wide range of designs without using “mesh closing techniques”.
- The strict exclusion of application techniques closing the open mesh structure of the textile material is the only practical possibility to consistently apply the rules and will be implemented. The only exception is the use for markings as permitted by advertising rules and for labels. Subject to this exception, any other element, notably of design, irrespective of its size, must be applied with a technique/method which does not close the open meshed structure of the textile material.

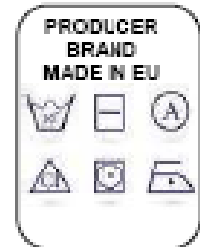
Interpretation/ Application

The only permitted use of coating/treatments which close the open mesh structure of textile material is for markings as permitted by the rules on commercial identifications and for labels (notably approval notice label) NB: THE FINA SA COMMISSION is not in charge of applying the rules on commercial markings.

2.3. Clarification to 3.1.2. “Surface treatment of the textile fabric” (Technical Label)

Provision:

any material added on to the surface of the textile fabric (e.g. coating, printing, impregnation) shall not close the overall open mesh structure of the base textile fabric. The treated material shall further comply with all requirements in particular in regard to thickness, permeability and flexibility. This part of the rule does not apply to logos and labels. This applies to both the manufacturing level and the actual use of the swimsuit.



The FINA SA Commission position

Given that:

- Technical label is the one used by the manufacturers for information following the legal and local requirements at a place/ market of product sales/distribution. Normally the information to be placed on a technical label is the one about a name of producer, effective place of production, name of the product (model), type of material used, general information on handle and care of the product.
- Attachment method may constitute mesh closing coating/treatment
- Unbound samples of material shall be provided for each material separately and also exactly as effectively used combined when attached together in the swimsuit.
- The Technical labels are applied/ attached to the inner side of the swimwear as direct printing on the surface or as a tag attached to a seam.
- The label should not be visible when the product is worn.
- In case of direct printing on the inner surface of the product, the size of the label has to be not more than 35cm².
- Only two labels are allowed to be placed on each piece of the swimwear with 5cm distance in between as minimum.

Interpretation/ Application

Considering above mentioned the regulations regarding permitted use of coating/treatments which close the open mesh structure of textile material does not apply to the surface used for technical labels.

2.4. Clarification to 3.1.2. “Variety of materials”

Provision

When multiple layers are applied, they must be attached together. However, there is an exception for the privacy areas. Delimitation of the privacy areas where unattached layers can be accepted is an issue.

The FINA SA Commission position

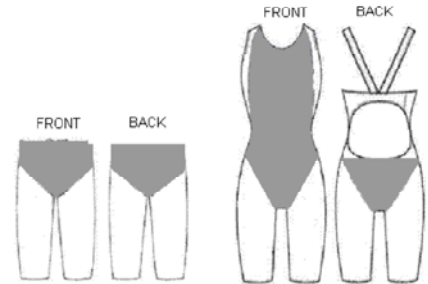
Given that:

- It is difficult to have a common definition of privacy areas.
- For women, the privacy layer as used often extends from the crotch area to the chest area.
- The application of an extensive interpretation of the privacy areas is possible for simplification purpose.

Interpretation/ Application

Unattached layers are accepted as privacy layers (see exhibit)

- Men: all around pelvic area and buttocks as shown (can not go above natural waist line and below a cut on an upward angle towards the top of the leg).
- Women: same as for men + breast area with possibility to continue down from the breast to the pelvic area as shown. (front panel cannot extend to sides).
- It is clarified that the extensive delimitation of privacy areas does not permit using unattached double layers for any other purpose. For example, unattached double layers for women can only be used if there is continuity in construction from the crotch area up to, and including, the breast area.



2.5. Clarification to 3.1.4. “ Construction” and 3.1.3 “Material (measured values)”

Provision

Seams must remain limited to functional purposes. The use of seams shall not affect compliance with criteria. However, the seams themselves are exempted from the application of the thickness rule and the permeability is not measured on seams. Further, non textile material has to be used in certain particular cases, notably in grippers.

The concern is to find an appropriate solution allowing effective seams but at the same time preventing seams developing into a main feature of construction (“seams suits”).

The FINA SA Commission position

Given that:

- Seams raise particular issues.
- Exemption from the application of thickness criteria is provided in the rules.
- It is difficult to apply permeability on seams (e.g. welded seams).
- Seams require some use of non textile material, notably for the so called “grippers” for edge seams or use of “welded” seams.

There is a need for further clarifying the delimitation of legitimate use of seams and seams construction. Permeability measurement will not be effected on legitimate seams. Exemptions can also apply in the use of textile material for edge-seams or in reinforcement areas.

Interpretation/ Application

Development of specific guidelines on seams (see attached document).

Careful observation of developments and express reserve of possibility to intervene against excessive or non functional use of seams.

3. Clarification to clause APPLICATION PROCEDURE

3.1. Clarification to 4.2.2 “ Application”

The material samples provided must enable effective relevant testing, notably but not limited to permeability. This must also be the case also when materials are used combined (multiple layers).

The FINA SA Commission position

Given that:

- Attachment methods between layers may have an impact on measurements and test results.
- Attachment method may constitute mesh closing coating/treatment.
- Unbound samples of material shall be provided for each material separately and also exactly as effectively used combined when attached together in the swimsuit.

Interpretation/ Application

Manufacturers must provide:

- Unbound sample of each material.
- Unbound sample of combined materials exactly as used in the swimsuits.
- Description of method used to bind the layers together.